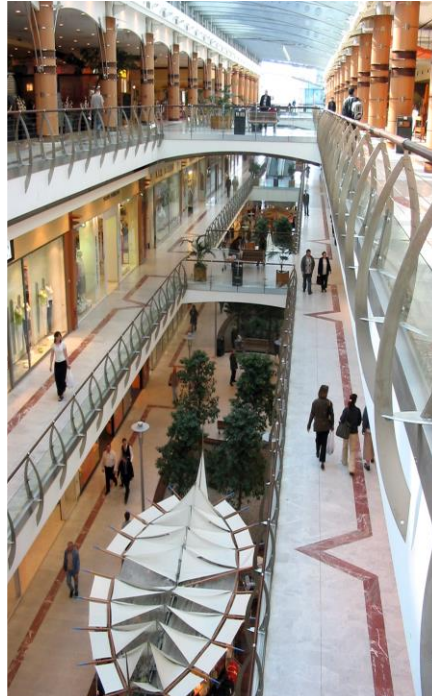


## BCS Series



## SINGLE INLET CENTRIFUGAL FAN

### Backward Incline - BCS



GTG Industries Sdn Bhd certifies that the model: BCS shown herein is licensed to bear the AMCA Seal.

The ratings shown are based on tests and procedures performed in accordance with AMCA Publication 211 and AMCA Publication 311 and comply with the requirements of the AMCA Certified Ratings Program.





## BCS Series

- ◆ Compact in size for easy installation and maintenance
- ◆ Range : 315,355, 400, 450, 500, 560, 630, 710, 800, 900, 1000.
- ◆ Various orientations and mounting configurations available
- ◆ Low noise and high efficiency

## Introduction

**BCS Series** fan with backward incline blade couple with single inlet housing provides large air volume at high static pressure with **non-overloading characteristic performance** i.e. the required power does not exceed a certain value with the increase of air volume. With this perfect **limit load** characteristics, with the welded casing and drain hole features, the BCS is ideal choice for kitchen exhaust and also suitable for various ventilation system in large commercial and industrial buildings, warehouses, plants etc.



**Fan Casing**

- Material : Steel with 2 layers of anti corrosion paint
- c/w outlet flanges
- Compact and light weight



**Impeller**

- Backward curve blade, SISW (single inlet single width)
- Material : Steel
- High efficiency and low noise



**Drain hole c/w Plug**

- For drainage purpose



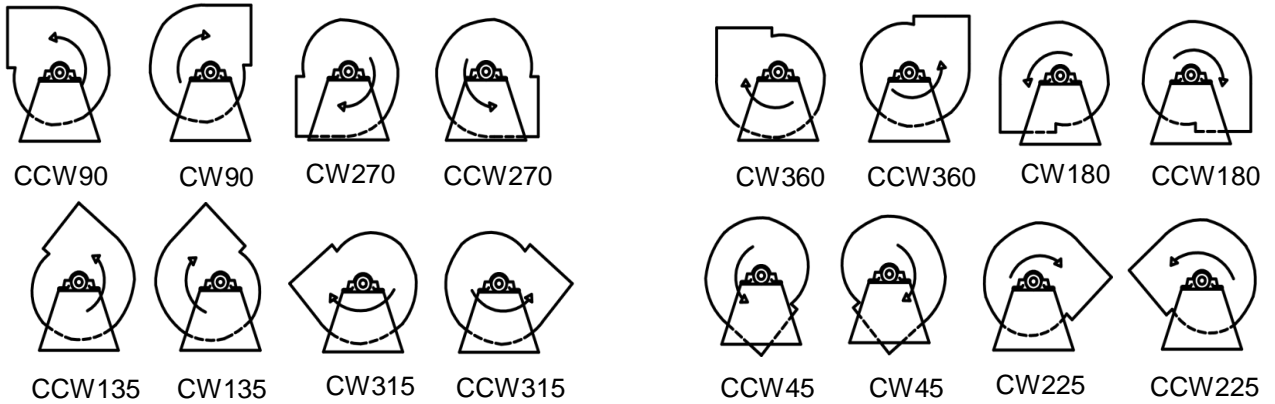
**Access Door**

- Easy access for cleaning and maintenance works

# Direction of Rotation and Discharge

This is accordance with AMCA Standard 99-2406-03

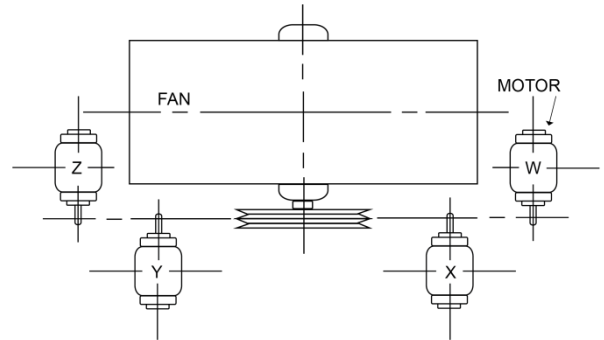
Direction of rotation is determined from the drive side. On single inlet fans, drive side is considered as opposite inlet, regardless of actual drive location.



## Standard Motor Positions

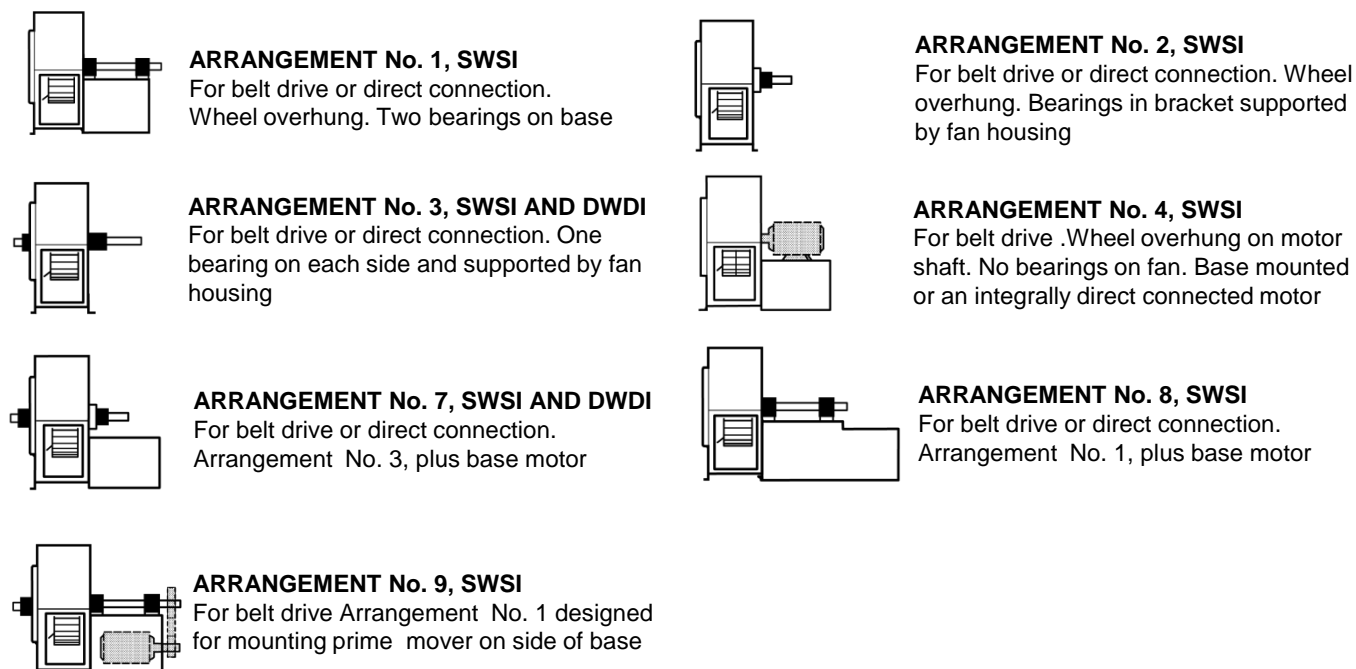
This is accordance with AMCA Standard 99-2407-03

The location of motor is determined from plan view of the blower, designating the motor position by letters W, X, Y and Z as the case may be.



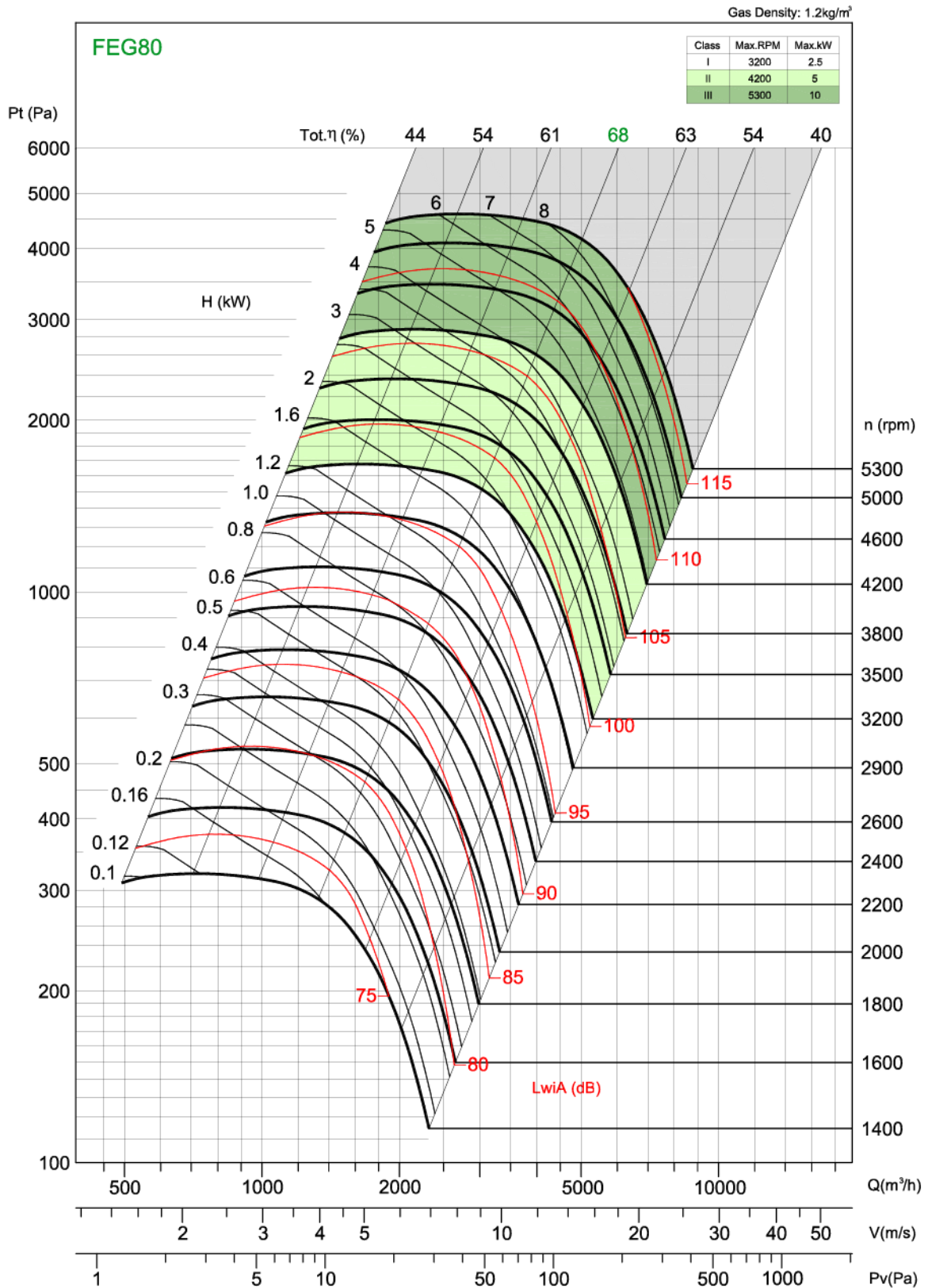
## Arrangements of Drive

This is accordance with AMCA Standard 99-2404-03



# Performance Curve

## BCS 315



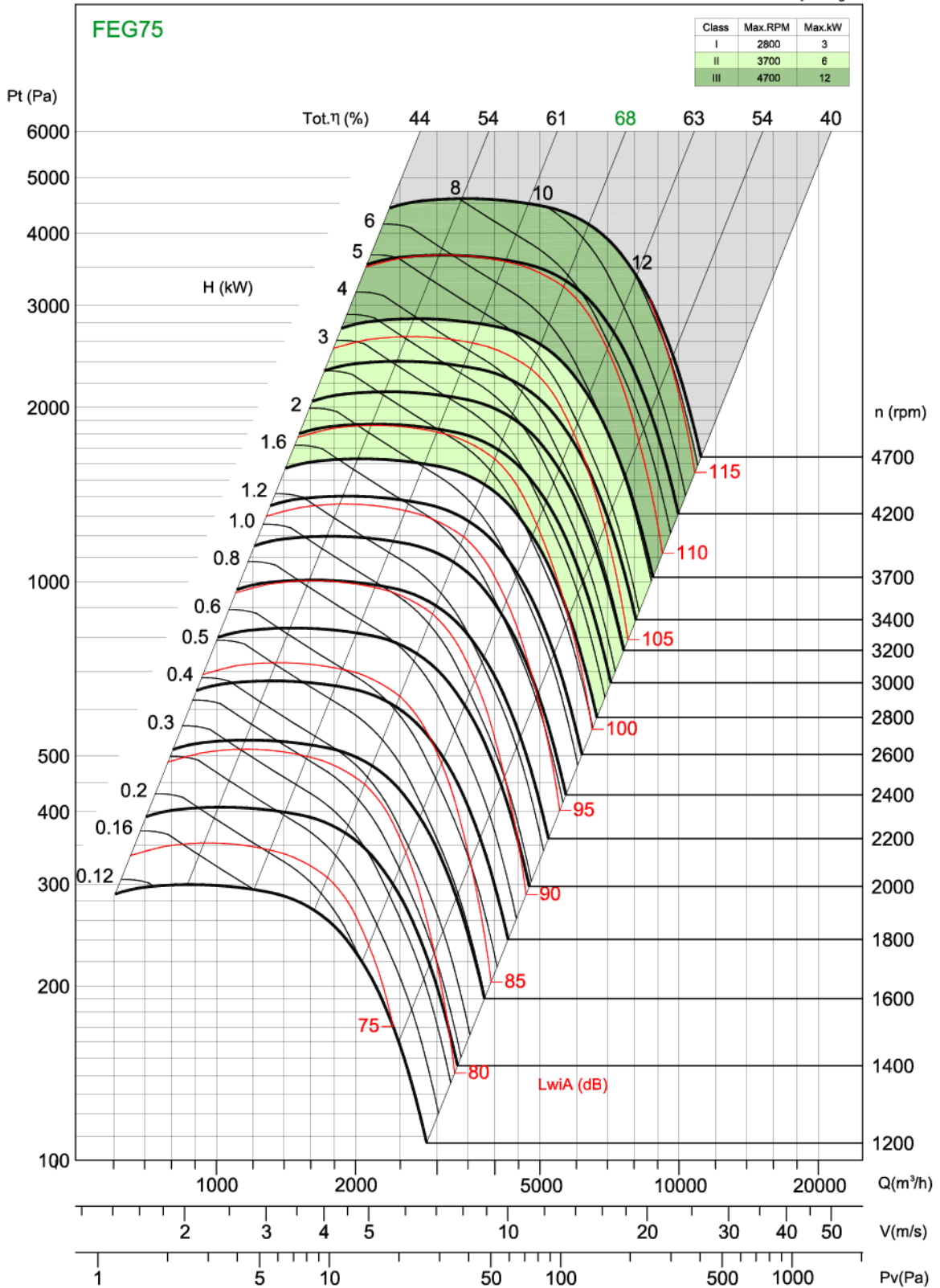
Performance certified is for installation type B - Free inlet, Ducted outlet. Power rating (kW) does not include transmission losses. Performance ratings do not include the effects of appurtenances (accessories). The A-weighted sound ratings shown have been calculated per AMCA International Standard 301. Values shown are for inlet LwiA sound power levels for installation Type B: free inlet, ducted outlet.



# Performance Curve

## BCS 355

Gas Density: 1.2kg/m<sup>3</sup>



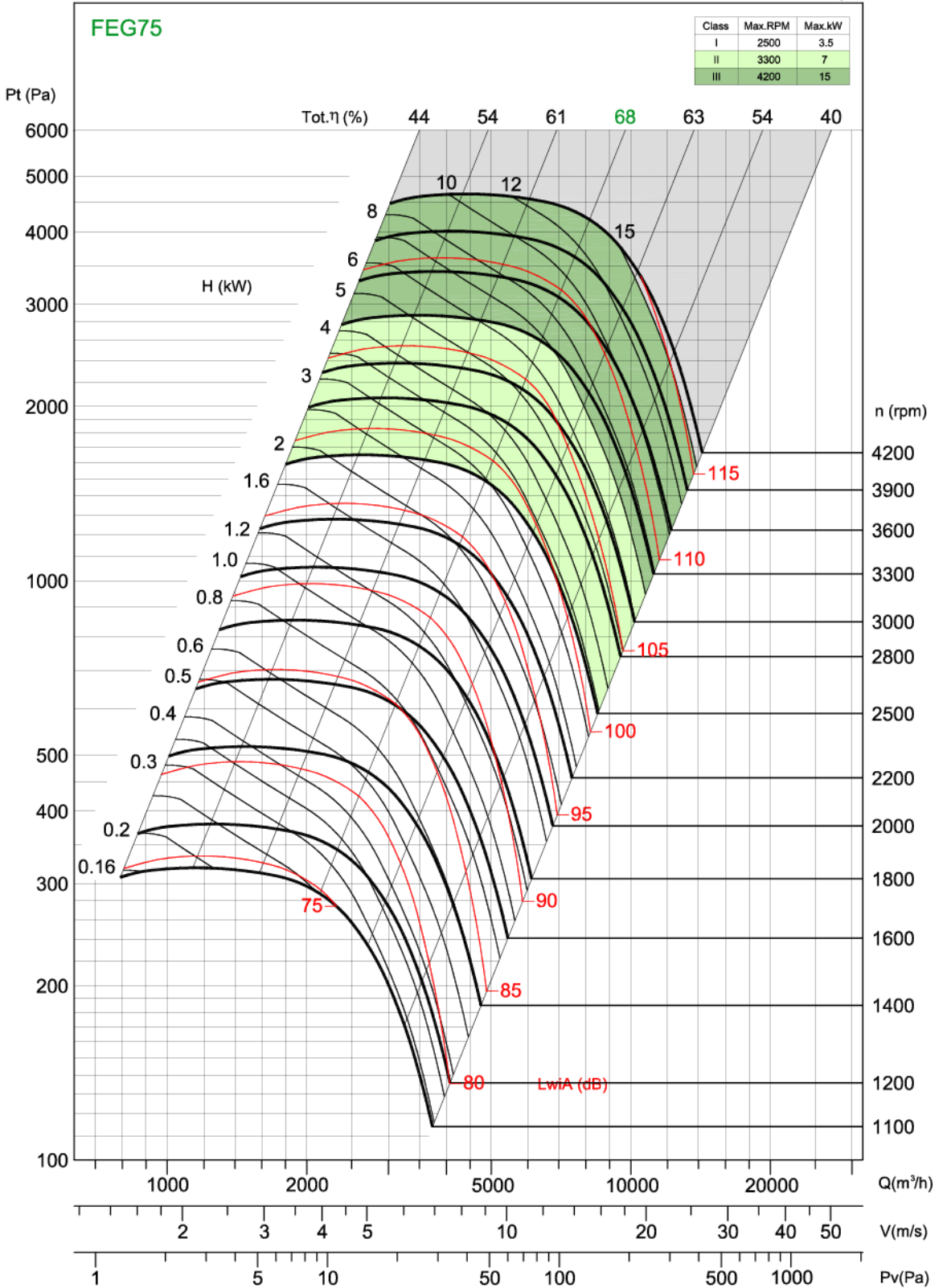
Performance certified is for installation type B - Free inlet, Ducted outlet. Power rating (kW) does not include transmission losses. Performance ratings do not include the effects of appurtenances (accessories). The A-weighted sound ratings shown have been calculated per AMCA International Standard 301. Values shown are for inlet LwA sound power levels for installation Type B: free inlet, ducted outlet.



# Performance Curve

## BCS 400

Gas Density: 1.2kg/m<sup>3</sup>



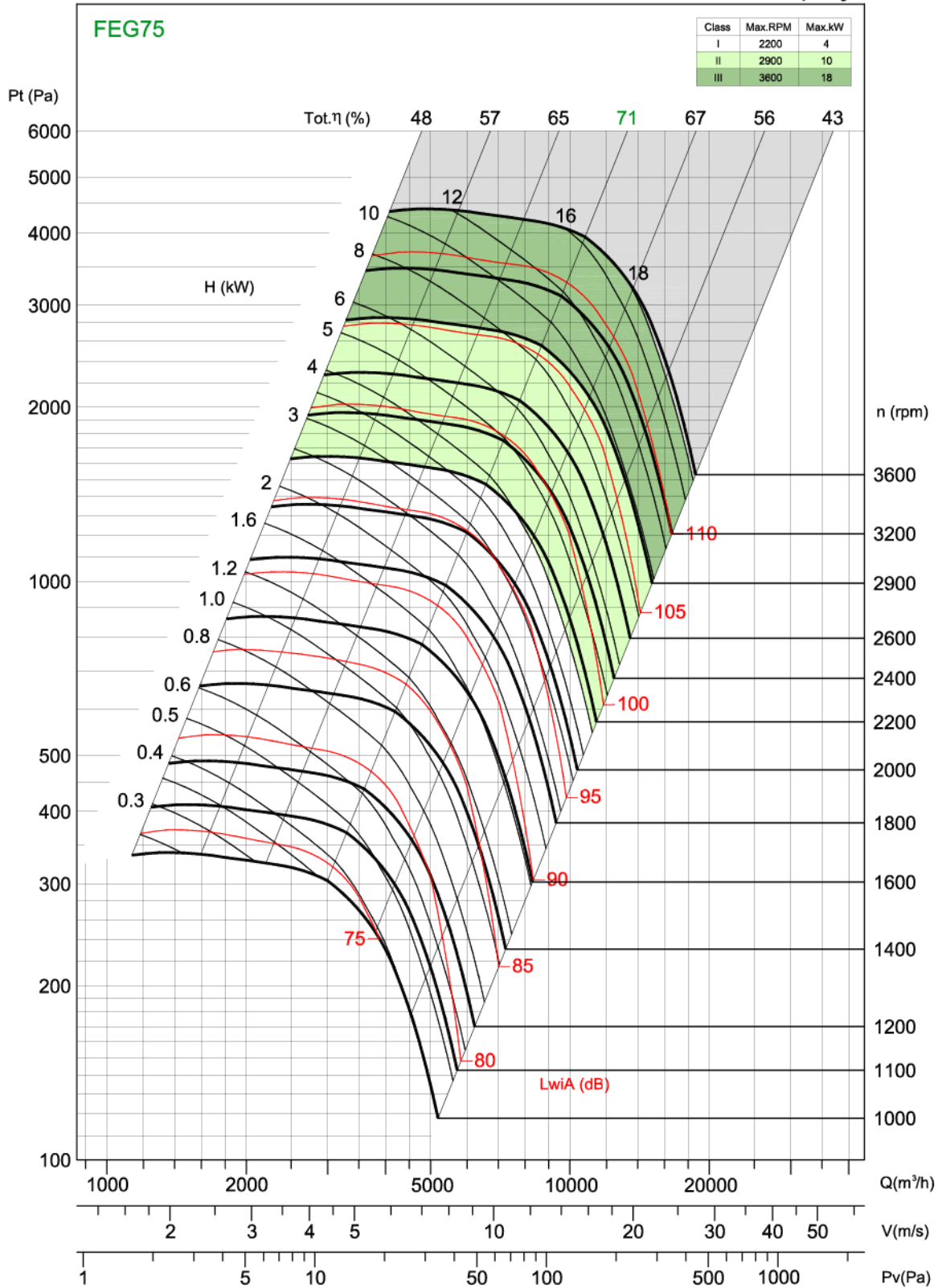
Performance certified is for installation type B - Free inlet, Ducted outlet. Power rating (kW) does not include transmission losses. Performance ratings do not include the effects of appurtenances (accessories). The A-weighted sound ratings shown have been calculated per AMCA International Standard 301. Values shown are for inlet LwA sound power levels for installation Type B: free inlet, ducted outlet.



# Performance Curve

## BCS 450

Gas Density: 1.2kg/m<sup>3</sup>



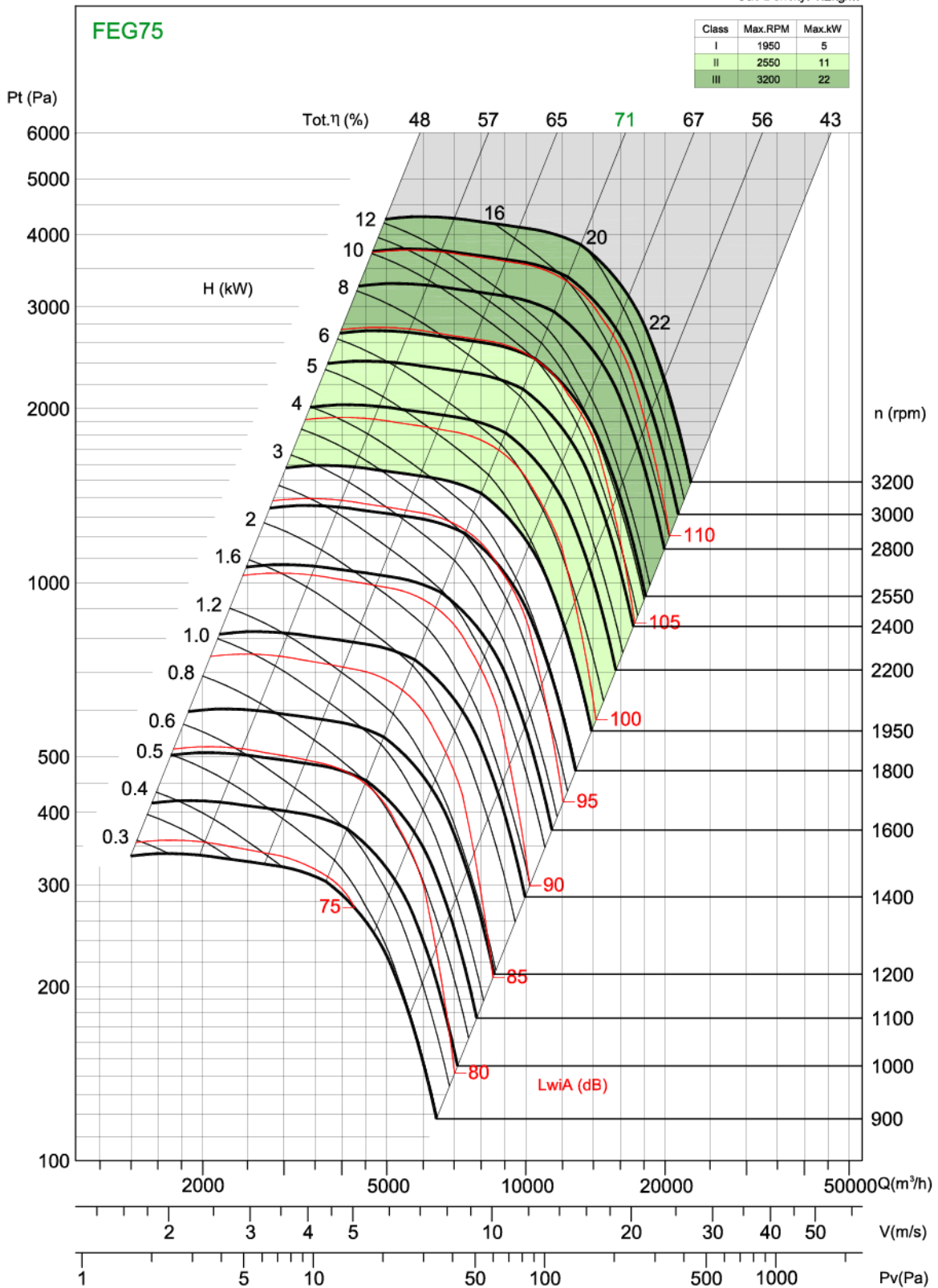
Performance certified is for installation type B - Free inlet, Ducted outlet. Power rating (kW) does not include transmission losses. Performance ratings do not include the effects of appurtenances (accessories). The A-weighted sound ratings shown have been calculated per AMCA International Standard 301. Values shown are for inlet LwiA sound power levels for installation Type B: free inlet, ducted outlet.



# Performance Curve

## BCS 500

Gas Density: 1.2kg/m<sup>3</sup>



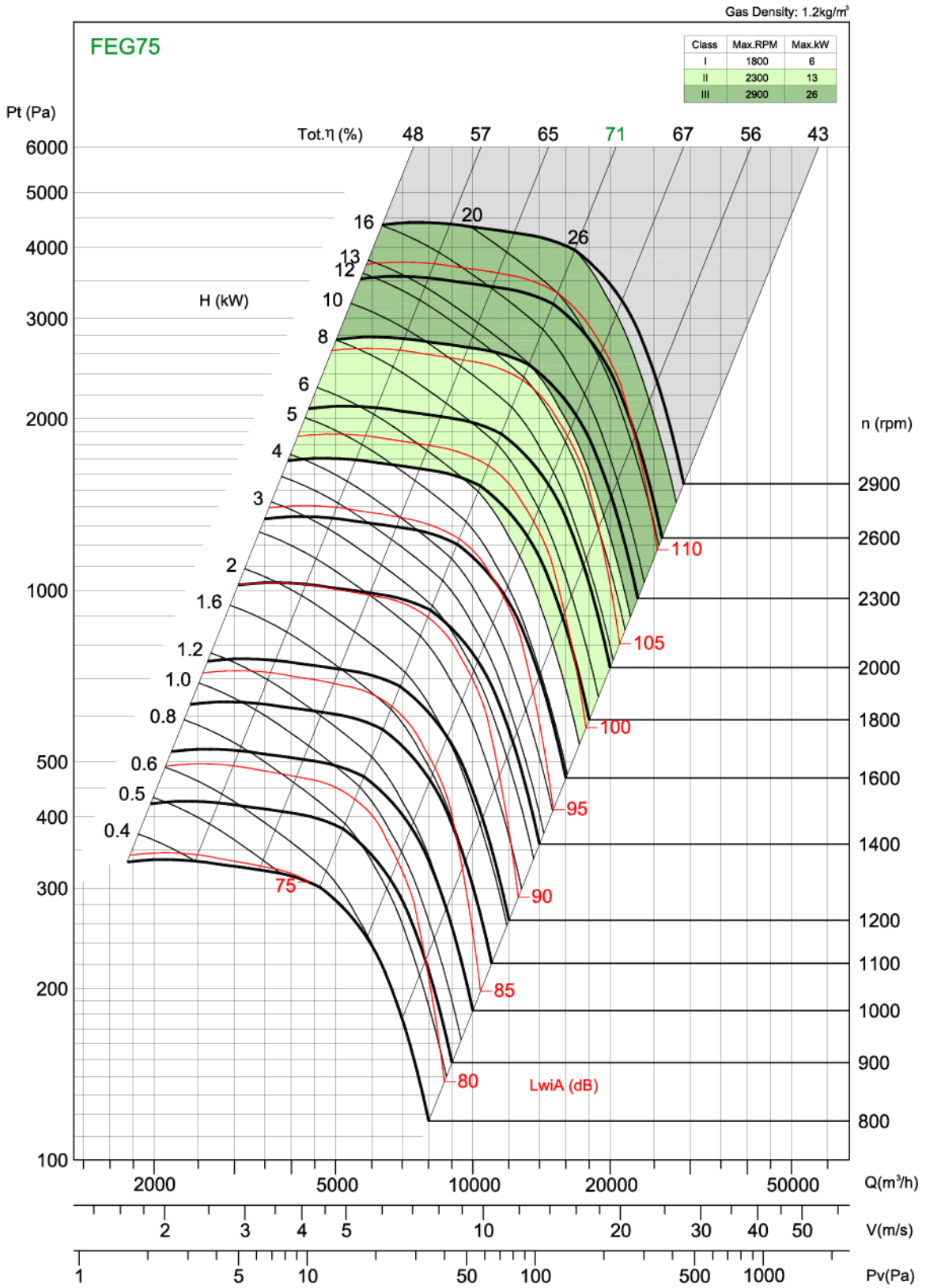
Performance certified is for installation type B - Free inlet, Ducted outlet. Power rating (kW) does not include transmission losses. Performance ratings do not include the effects of appurtenances (accessories). The A-weighted sound ratings shown have been calculated per AMCA International Standard 301. Values shown are for inlet LwiA sound power levels for installation Type B: free inlet, ducted outlet.





# Performance Curve

## BCS 560



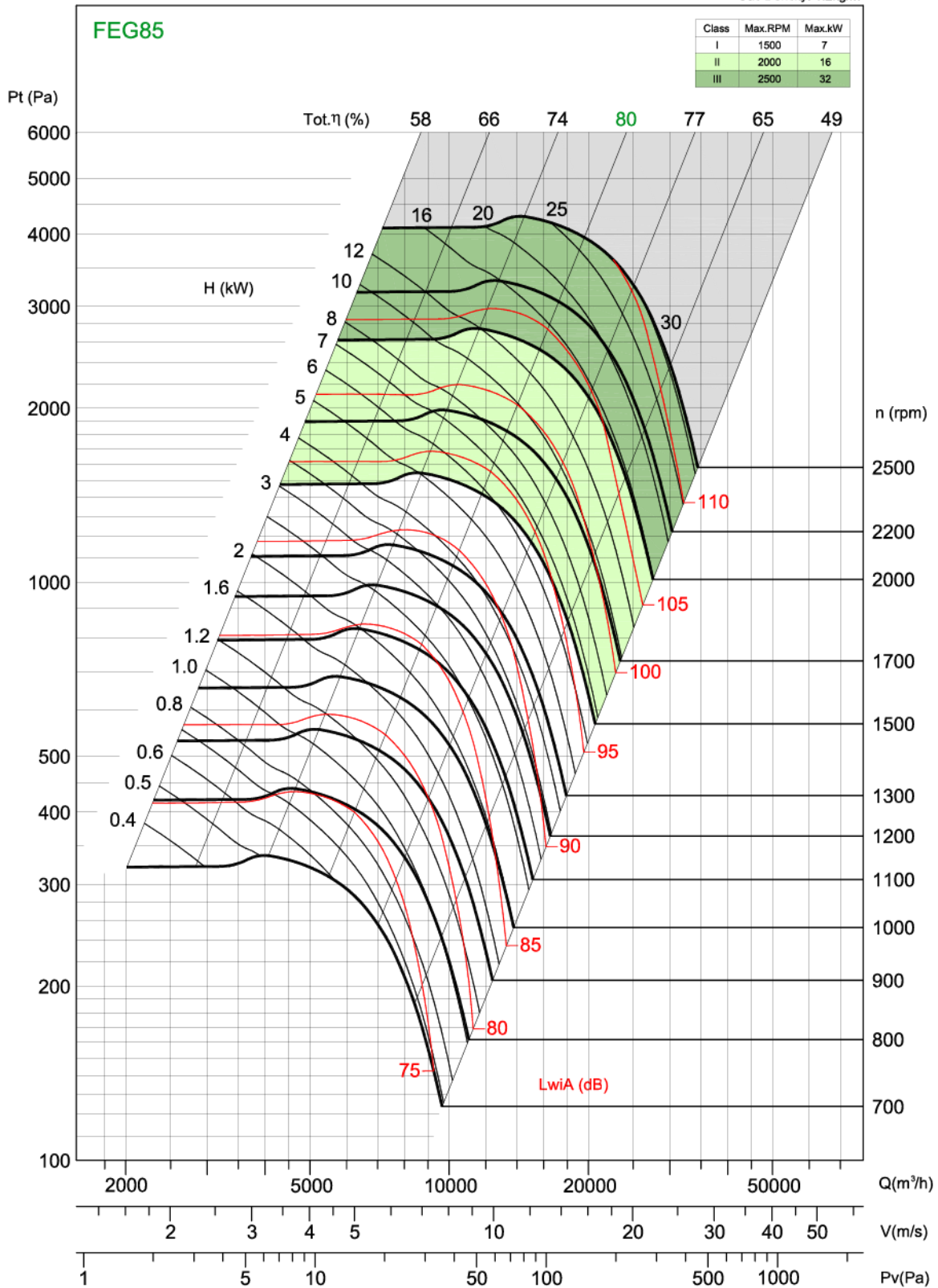
Performance certified is for installation type B - Free inlet, Ducted outlet. Power rating (kW) does not include transmission losses. Performance ratings do not include the effects of appurtenances (accessories). The A-weighted sound ratings shown have been calculated per AMCA International Standard 301. Values shown are for inlet LwIA sound power levels for installation Type B: free inlet, ducted outlet.



# Performance Curve

## BCS 630

Gas Density: 1.2kg/m<sup>3</sup>



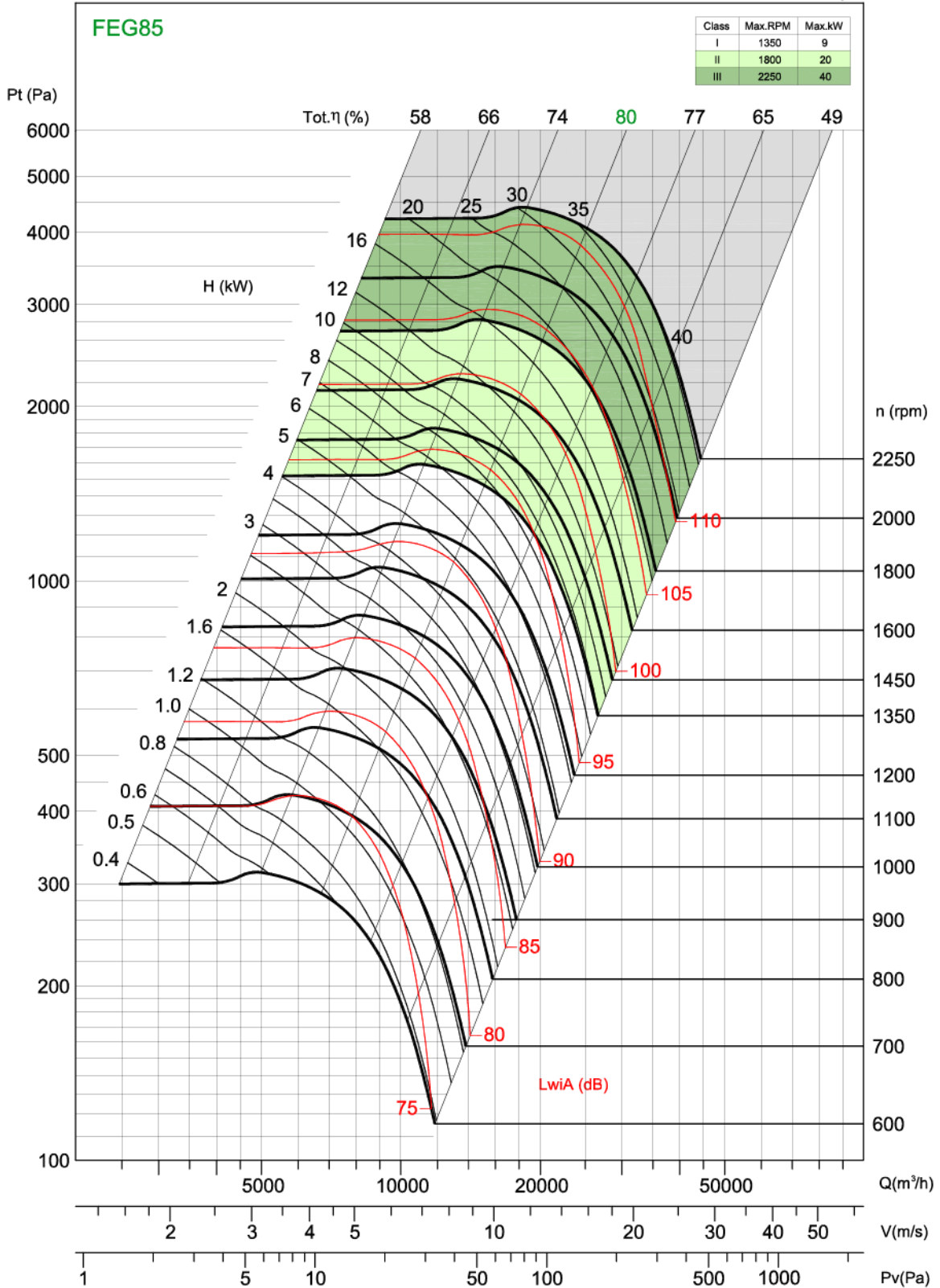
Performance certified is for installation type B - Free inlet, Ducted outlet. Power rating (kW) does not include transmission losses. Performance ratings do not include the effects of appurtenances (accessories). The A-weighted sound ratings shown have been calculated per AMCA International Standard 301. Values shown are for inlet LwiA sound power levels for installation Type B: free inlet, ducted outlet.



# Performance Curve

## BCS 710

Gas Density: 1.2kg/m<sup>3</sup>



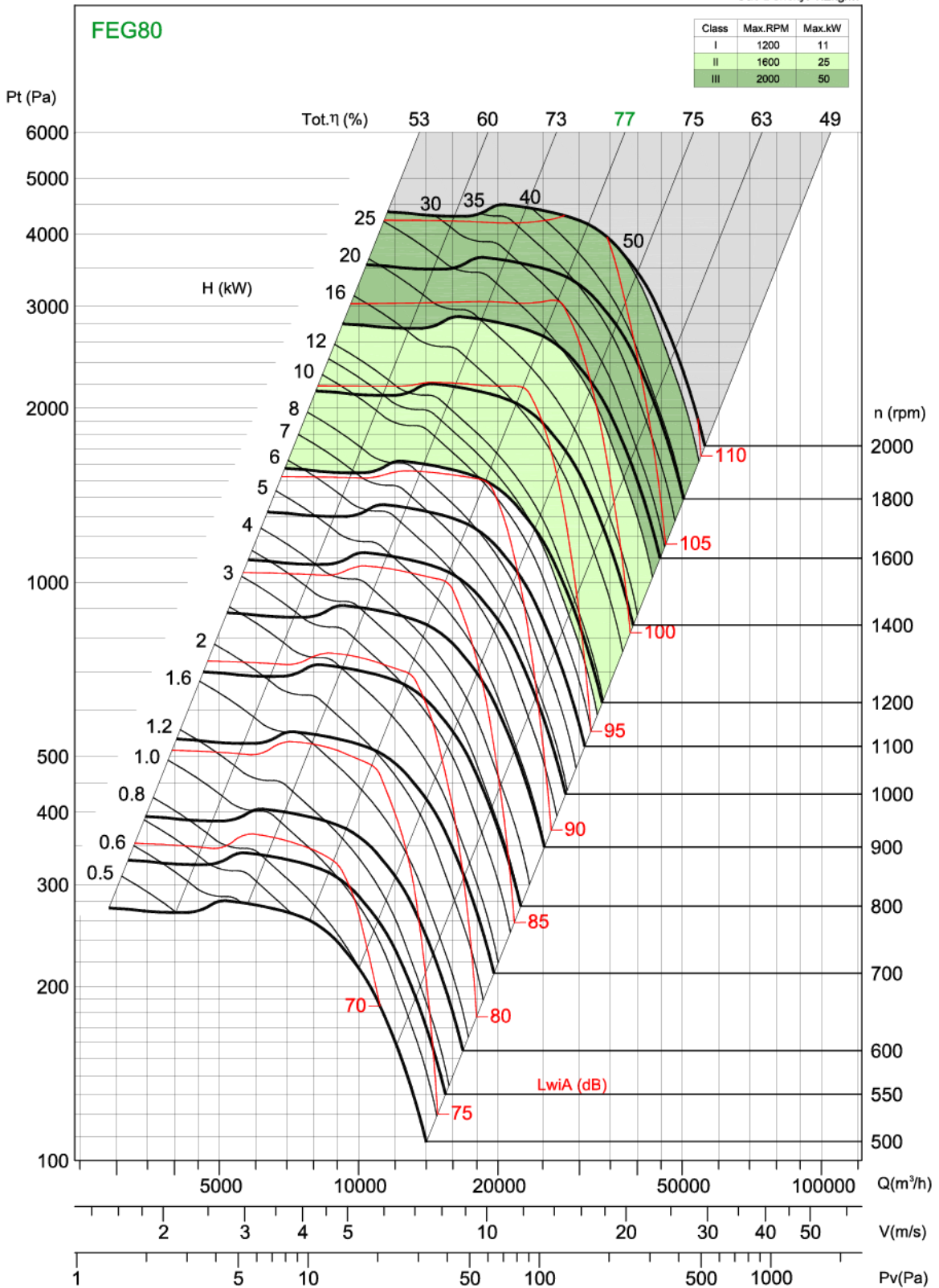
Performance certified for installation type B - Free inlet, Ducted outlet. Power rating (kW) does not include transmission losses. Performance ratings do not include the effects of appurtenances (accessories). The A-weighted sound ratings shown have been calculated per AMCA International Standard 301. Values shown are for inlet LwIA sound power levels for installation Type B: free inlet, ducted outlet.



# Performance Curve

## BCS 800

Gas Density: 1.2kg/m<sup>3</sup>



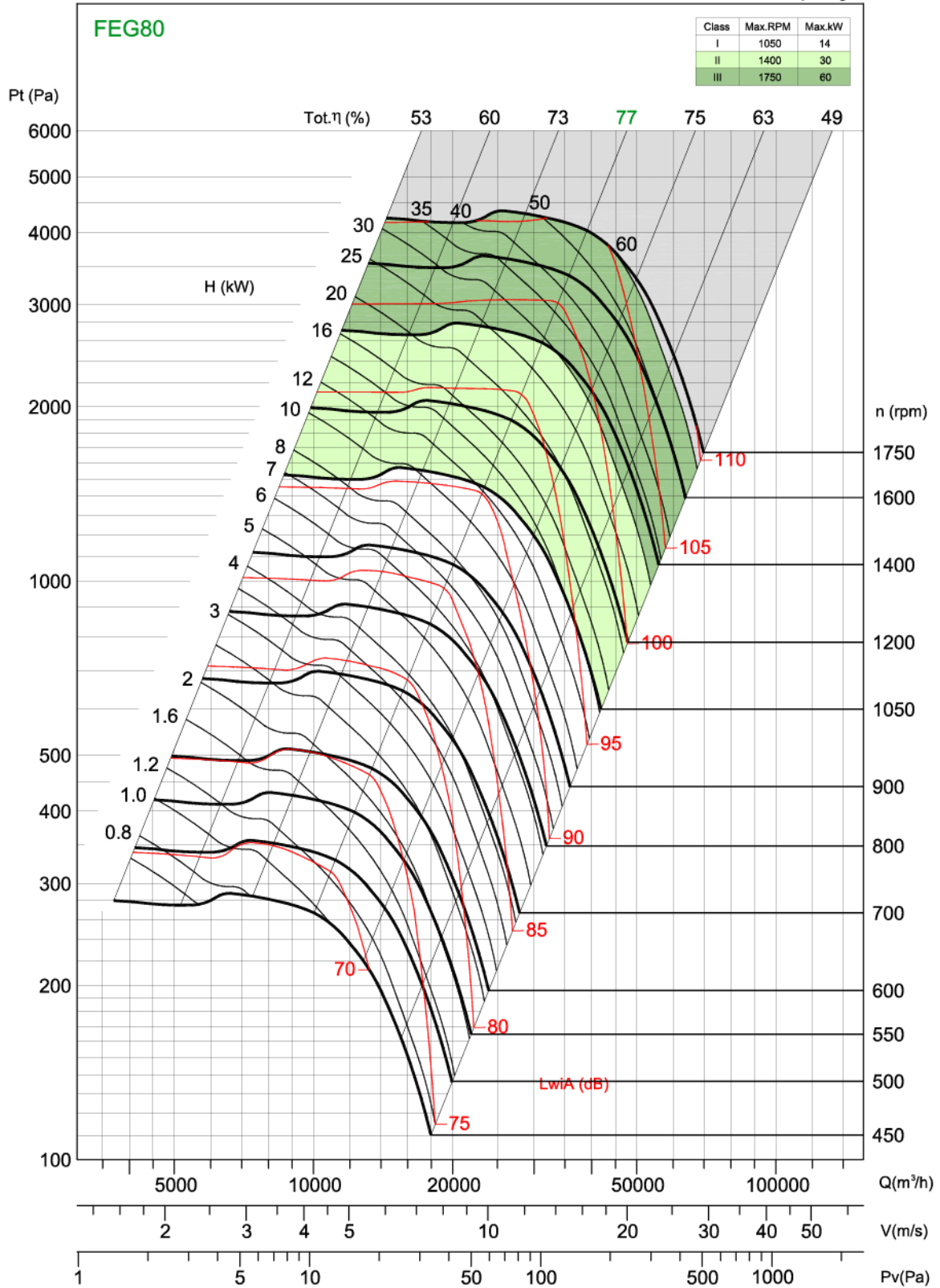
Performance certified for installation type B - Free inlet, Ducted outlet. Power rating (kW) does not include transmission losses. Performance ratings do not include the effects of appurtenances (accessories). The A-weighted sound ratings shown have been calculated per AMCA International Standard 301. Values shown are for inlet LwiA sound power levels for installation Type B: free inlet, ducted outlet.



# Performance Curve

## BCS 900

Gas Density: 1.2kg/m<sup>3</sup>



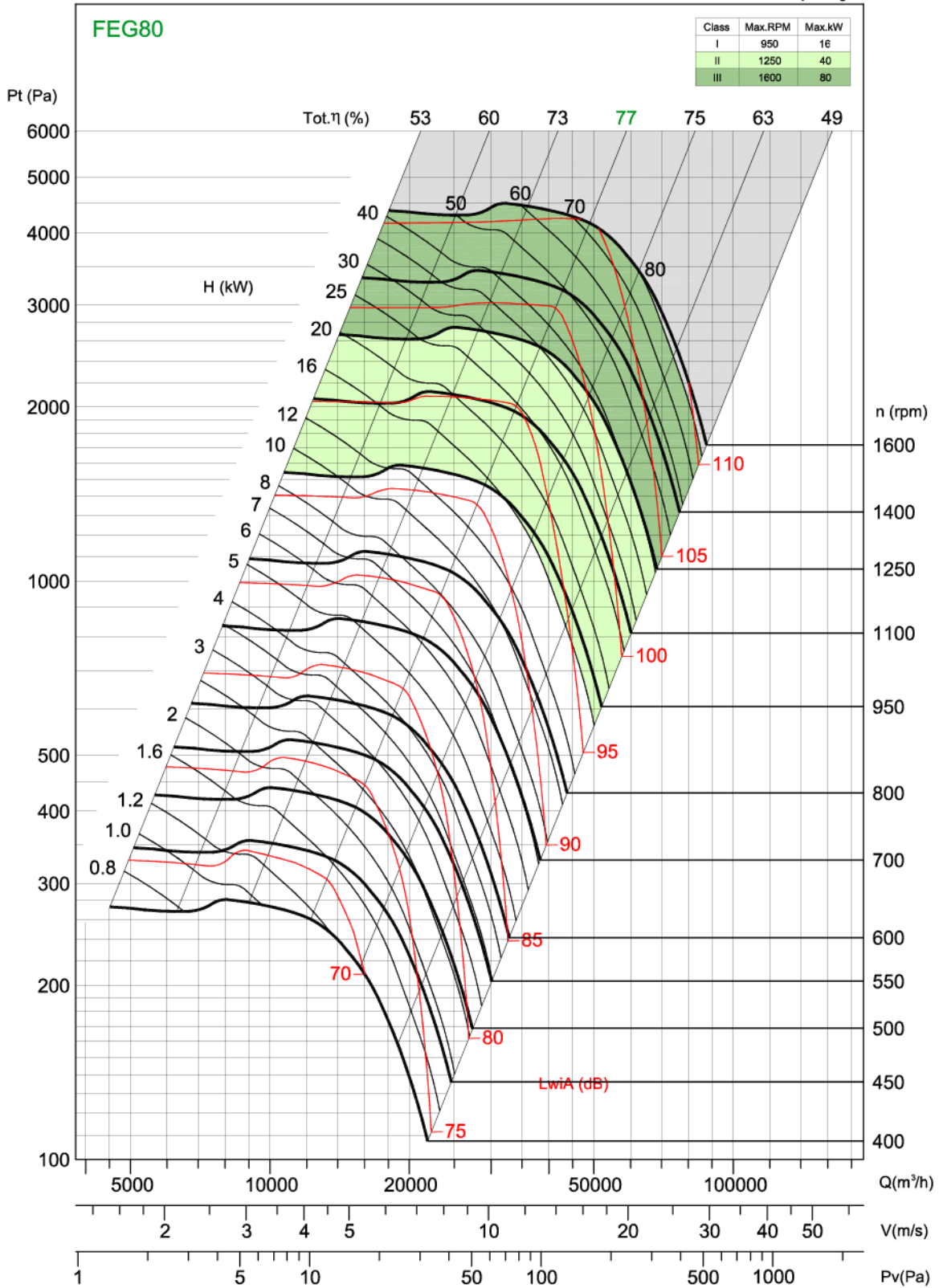
Performance certified is for installation type B - Free inlet, Ducted outlet. Power rating (kW) does not include transmission losses. Performance ratings do not include the effects of appurtenances (accessories). The A-weighted sound ratings shown have been calculated per AMCA International Standard 301. Values shown are for inlet LwA sound power levels for installation Type B: free inlet, ducted outlet.



# Performance Curve

## BCS 1000

Gas Density: 1.2kg/m<sup>3</sup>

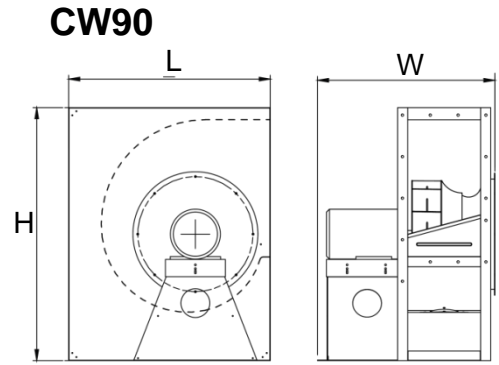


Performance certified for installation type B - Free inlet, Ducted outlet. Power rating (kW) does not include transmission losses. Performance ratings do not include the effects of appurtenances (accessories). The A-weighted sound ratings shown have been calculated per AMCA International Standard 301. Values shown are for inlet LwiA sound power levels for installation Type B: free inlet, ducted outlet.

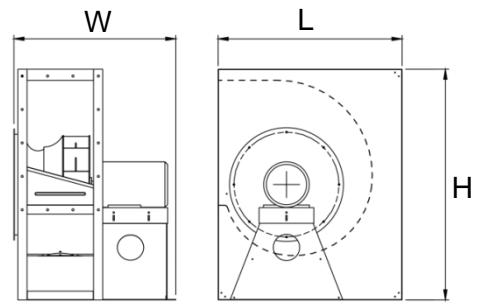


## Dimension (mm)

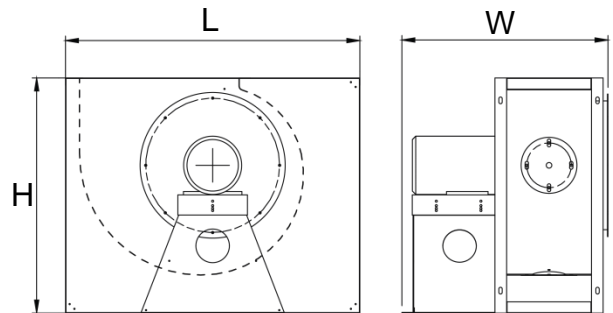
BCSA - CW90 & CCW90				
Model	L	H	W	Max. Motor Frame Size
BCS-A 315	632	792	668.8	100L
BCS-A 355	699	878	699.1	100L
BCS-A 400	778	976	806.1	132S
BCS-A 450	864.5	1085	947.1	160M
BCS-A 500	946.5	1189	1037.1	160L
BCS-A 560	1049.5	1319	946.6	132S
BCS-A 630	1170	1472	1001.6	132M
BCS-A 710	1306	1644	1129.6	160M
BCS-A 800	1251.5	1507	1346.6	200L
BCS-A 900	1404.5	1685	1427.1	225S
BCS-A 1000	1539.5	1846	1497.1	225S



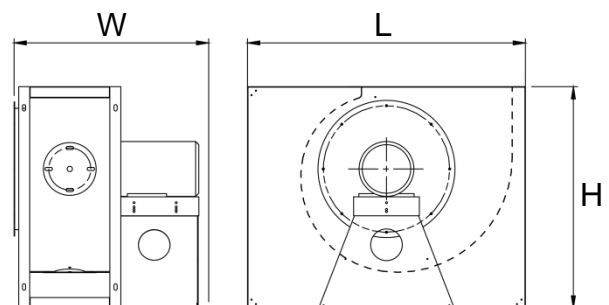
### CCW90



BCSA – CW360				
Model	L	H	W	Max. Motor Frame Size
BCS-A 315	632	792	668.8	100L
BCS-A 355	699	878	699.1	100L
BCS-A 400	778	976	806.1	132S
BCS-A 450	864.5	1085	947.1	160M
BCS-A 500	946.5	1189	1037.1	160L
BCS-A 560	1049.5	1319	946.6	132S
BCS-A 630	1170	1472	1001.6	132M
BCS-A 710	1306	1644	1129.6	160M
BCS-A 800	1507	1251.5	1346.6	200L
BCS-A 900	1685	1404.5	1427.1	225S
BCS-A 1000	1846	1539.5	1497.1	225S

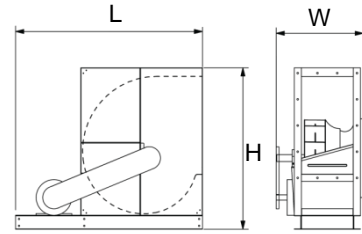


BCSA – CCW360				
Model	L	H	W	Max. Motor Frame Size
BCS-A 315	792	632	668.8	100L
BCS-A 355	878	699	699.1	100L
BCS-A 400	976	778	806.1	132S
BCS-A 450	1085	864.5	947.1	160M
BCS-A 500	1189	946.5	1037.1	160L
BCS-A 560	1319	1049.5	946.6	132S
BCS-A 630	1472	1170	1001.6	132M
BCS-A 710	1644	1306	1129.6	160M
BCS-A 800	1507	1251.5	1346.6	200L
BCS-A 900	1685	1404.5	1427.1	225S
BCS-A 1000	1846	1539.5	1497.1	225S

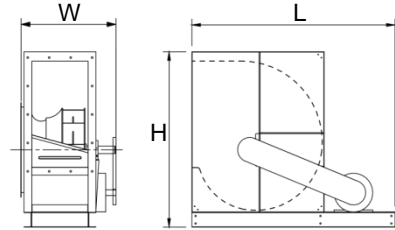


## Dimension (mm)

BCS - CW90 & CCW90				
Model	L	H	W	Max. Motor Frame Size
BCS 315	934.5	710	413.8	100L
BCS 355	958.5	782	457.1	100L
BCS 400	1121	862	489.1	132S
BCS 450	1224	955	549.1	160M
BCS 500	1354	1045	599.1	160L
BCS 560	1371	1179	669.6	132S
BCS 630	1515	1306	684.6	132M
BCS 710	1686	1450	757.6	160M
BCS 800	1887.5	1607	812.6	200L
BCS 900	2071.5	1785	895.1	225S
BCS 1000	2223.5	1946	986.1	225S

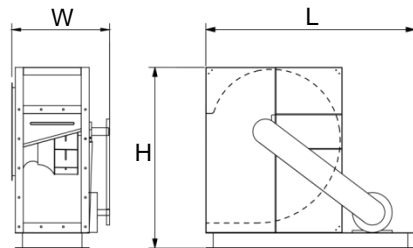


CW90

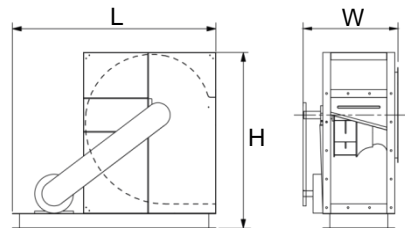


CCW900

BCS - CW270 & CCW270				
Model	L	H	W	Max. Motor Frame Size
BCS 315	934.5	710	413.8	100L
BCS 355	958.5	782	457.1	100L
BCS 400	1121	862	489.1	132S
BCS 450	1224	955	549.1	160M
BCS 500	1354	1045	599.1	160L
BCS 560	1371	1179	669.6	132S
BCS 630	1515	1306	684.6	132M
BCS 710	1686	1450	757.6	160M
BCS 800	1887.5	1569	812.6	200L
BCS 900	2071.5	1747	895.1	225S
BCS 1000	2223.5	1908	986.1	225S

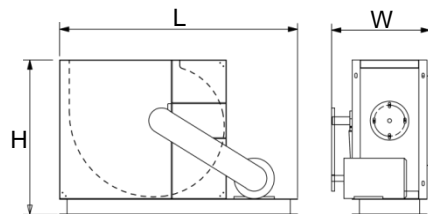


CW270

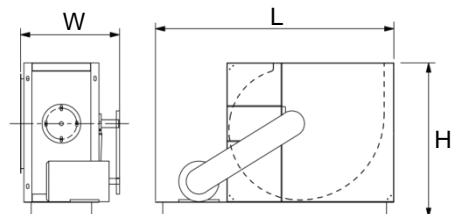


CCW270

BCS - CW360 & CCW360				
Model	L	H	W	Max. Motor Frame Size
BCS 315	1044.5	598	413.8	100L
BCS 355	1087.5	658	457.1	100L
BCS 400	1269	726	489.1	132S
BCS 450	1420.5	804.5	549.1	160M
BCS 500	1496.5	876.5	599.1	160L
BCS 560	1540.5	992.5	669.6	132S
BCS 630	1717	1099	684.6	132M
BCS 710	1924	1221	757.6	160M
BCS 800	2155	1351.5	812.6	200L
BCS 900	2384	1504.5	895.1	225S
BCS 1000	2479	1639.5	986.1	225S



CW360



CCW360

### GTG Industries Sdn Bhd

No.13, Jalan Astaka U8/88B  
 Seksyen U8, Bukit Jelutong  
 40150 Shah Alam, Selangor.  
 TEL +603- 78590213 FAX+603-74918138  
 EMAIL inquiry@gtg.com.my WEBSITE www.gtg.com.my



SCAN & VISIT OUR WEBSITE