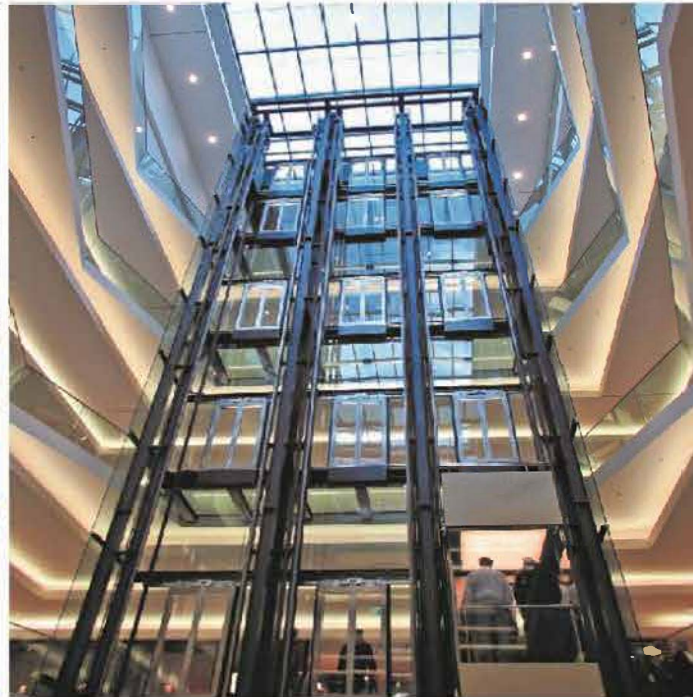


**CFQ  
Series**



## **Centrifugal In-Line Cabinet Fan Backward Curve CIL**





# CIL Cabinet Fan

## Introduction

CFQ Series is specially design for residential and commercial application, it produces high air volume at high static with low operating noise.

Suitable for:

<b>Condominium</b>	<b>Office</b>	<b>Restaurant</b>
Kitchen	Meeting room	Dining room
Toilet	Toilet	Kitchen

### Range

CFQ 225, CFQ 280, CFQ 315, CFQ 400, CFQ 500.

### Features

- In-Line application
- Suitable for installation with duct
- Easy installation
- Equipped with external rotor motor
- Compact in size

### Specification

#### Casing

- Material: GI Sheet Metal
- Optional Items:
  - 1) Powder coating
  - 2) Internal insulation with open cell PE for sound attenuation

#### Impeller

- Material: Aluminium
- Type: Backward curve centrifugal

#### Motor

- High efficiency external rotor motor
- Permanently lubricated ball bearing ensuring reliable and maintenance free operation
- Built-in internal protective device
- Insulation : Class F
- IP 44



### Accessories (optional)

#### Inlet Grille



- GAR 04 (For 4" Duct)
- GAR 06 (For 6" Duct)

#### Inlet Grille



- GAQ 04 (For 4" Duct)
- GAQ 06 (For 6" Duct)  
- (c/w Saranet Filter)

#### Inlet Grille



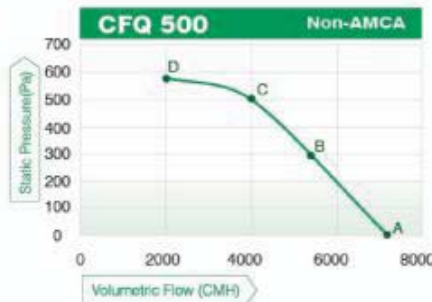
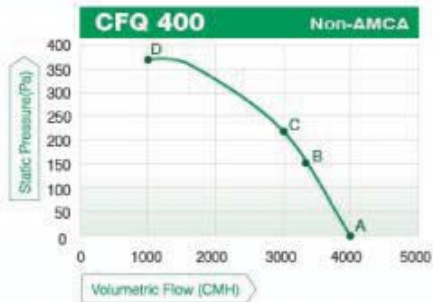
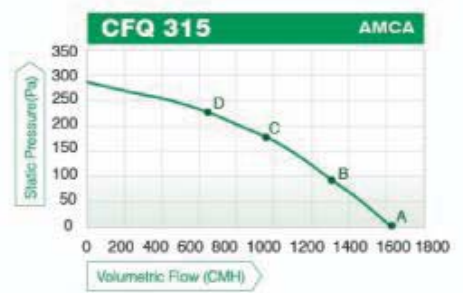
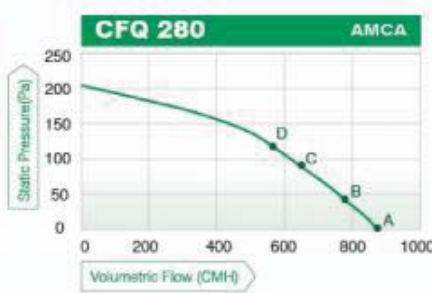
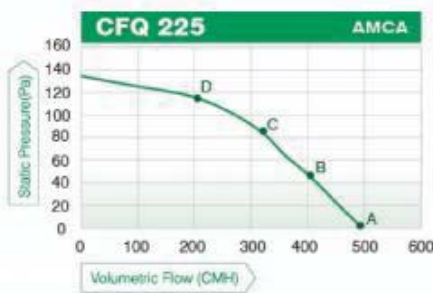
- GA6T (For 6" Duct)
- GA8T (For 8" Duct)

## Conversion Table

Air Flow

L/s	m <sup>3</sup> /hr	m <sup>3</sup> /s	CFM
1	3.6	0.001	2.119
0.278	1	0.278 x 10 <sup>-3</sup>	0.588
1000	3600	1	2119
0.063	0.227	0.063 x 10 <sup>-3</sup>	0.1337
0.472	1.7	0.472 x 10 <sup>-3</sup>	1

## Performance Curves



GTG Industries Sdn Bhd certifies that model CFQ225, CFQ280, CFQ315 shown herein is licensed to bear the AMCA Seal. The ratings shown are based on tests and procedures performed in accordance with AMCA Publication 211 and AMCA Publication 311 and comply with the requirements of the AMCA Certified Ratings Program. Models CFQ400, CFQ500 are not licensed by AMCA International.

\* The sound power level of A, B, C and D, please refer technical data below.

## Air Change Required per Hour

Home	Kitchen	15
	Bathroom and toilet	10
	Living room	6
Hotel	Ballroom	8
	Dining room	8
	Kitchen	15
	Corridor	5
	Toilet	10
Industrial Plant	General Working Area	6
	Painting Area	20
	Generator Room	20
Restaurant	Dining room	6
	Kitchen	20
	Banquet Hall	10

Ordinary Building	Office	6
	Waiting Room	10
	Conference Room	12
	Exhibition Hall	10
School	Chemical Laboratory	6
	Auditorium	6
	Gymnasium	8
	Library	6
	Classroom	6
Theatre	Auditorium	6
	Corridor	6
	Smoking Room	12
	Projection Room	20

## Conversion Table Static Pressure

psi	kg/cm <sup>2</sup>	W.G.		Pascal (Pa)
		(in.)	(ft.)	
1	0.07	27.7	2.309	$0.69 \times 10^4$
14.22	1	394.08	32.84	$9.81 \times 10^4$
$3.61 \times 10^{-2}$	$2.538 \times 10^{-3}$	1	0.083	248.84
$1.45 \times 10^{-4}$	$0.1 \times 10^{-4}$	0.004	$3.349 \times 10^{-4}$	1

## Technical Data

Model		CFQ 225	CFQ 280	CFQ 315	CFQ 400	CFQ 500
<b>Volt / Phase / Hz</b>		230 / 1 / 50	230 / 1 / 50	230 / 1 / 50	230 / 1 / 50	230 / 1 / 50
<b>Max Motor Input (W)</b>		52	107	150	560	1550
<b>Air Flow (CMH)</b>		497	878	1631	4000	7200
<b>Static Pressure (Pa)</b>		134	203	287	360	580
<b>Amps (A)</b>		0.23	0.53	0.68	2.46	6.8
<b>RPM</b>		1430	1410	1370	1350	1250
<b>Sound Power dB(A)</b>	Point A	67	70	73	75	77
	Point B	65	69	71	72	75
	Point C	65	68	69	70	73
	Point D	65	67	69	69	72
<b>Sound Pressure dB(A) at 3m</b>	Point A	47	49	52	54	56
	Point B	44	49	50	52	54
	Point C	44	47	48	49	52
	Point D	45	47	49	48	51

\*Speed (RPM) shown is nominal. Performance is based on actual speed of test.

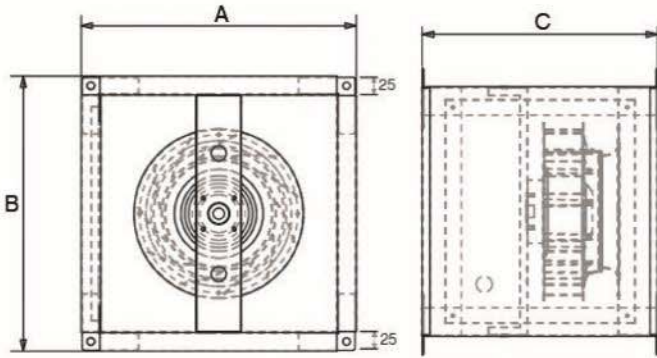
\*Sound Pressure-dB(A) at 3m levels are not licensed by AMCA International.

\*Performance certified is for installation type D-Ducted inlet, Ducted Outlet. Performance ratings do not include the effects of appurtenances (accessories).

\*The A-weighted sound ratings shown have been calculated per AMCA International Standard 901. Values shown are for inlet LwA Sound power levels for installation type D ducted Inlet, ducted outlet.

\*Models of CFQ 400 and CFQ 500 are not licensed to bear the AMCA certified ratings seal for sound performance.

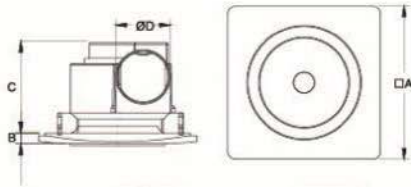
## Dimension ( mm )



MODEL	A	B	C	WEIGHT
CFQ 225	365	365	300	6.7
CFQ 280	440	440	300	9.4
CFQ 315	490	490	360	11.0
CFQ 400	610	610	440	22.0
CFQ 500	750	750	520	38.0

## Accessories

### Inlet Grille

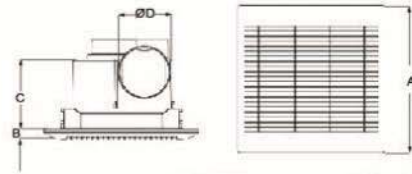


**GAR04**

**GAR06**

<b>A</b>	290	345
<b>B</b>	20	30
<b>C</b>	168	192
<b>D</b>	100	147
Ceiling Opening	245 x 230	310 x 295

### Inlet Grille

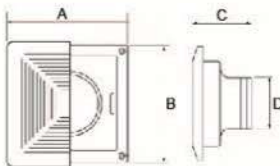


**GAQ04**

**GAQ06**

<b>A</b>	290	345
<b>B</b>	20	26
<b>C</b>	168	192
<b>D</b>	100	147
Ceiling Opening	245 x 230	310 x 295

### Inlet Grille



**GA6T**

**GA8T**

<b>A</b>	290	324
<b>B</b>	264	296
<b>C</b>	92	88
<b>D</b>	145	190

## GTG Industries Sdn Bhd

(912584-W)

No. 13, Jalan Astaka U8/88B  
Section U8, Bukit Jelutong  
40150 Shah Alam, Selangor.

TEL +603-7859 0213/0216/0217 FAX +03-7859 0218

EMAIL inquiry@gtg.com.my WEBSITE www.gtg.com.my



SCAN & VISIT OUR WEBSITE



Specification subject to change without prior notice

Catalogue ID: GTG/CFQR1  
January 2018