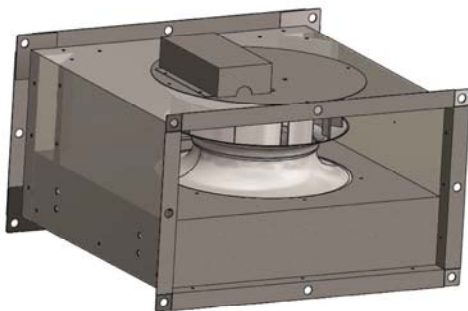
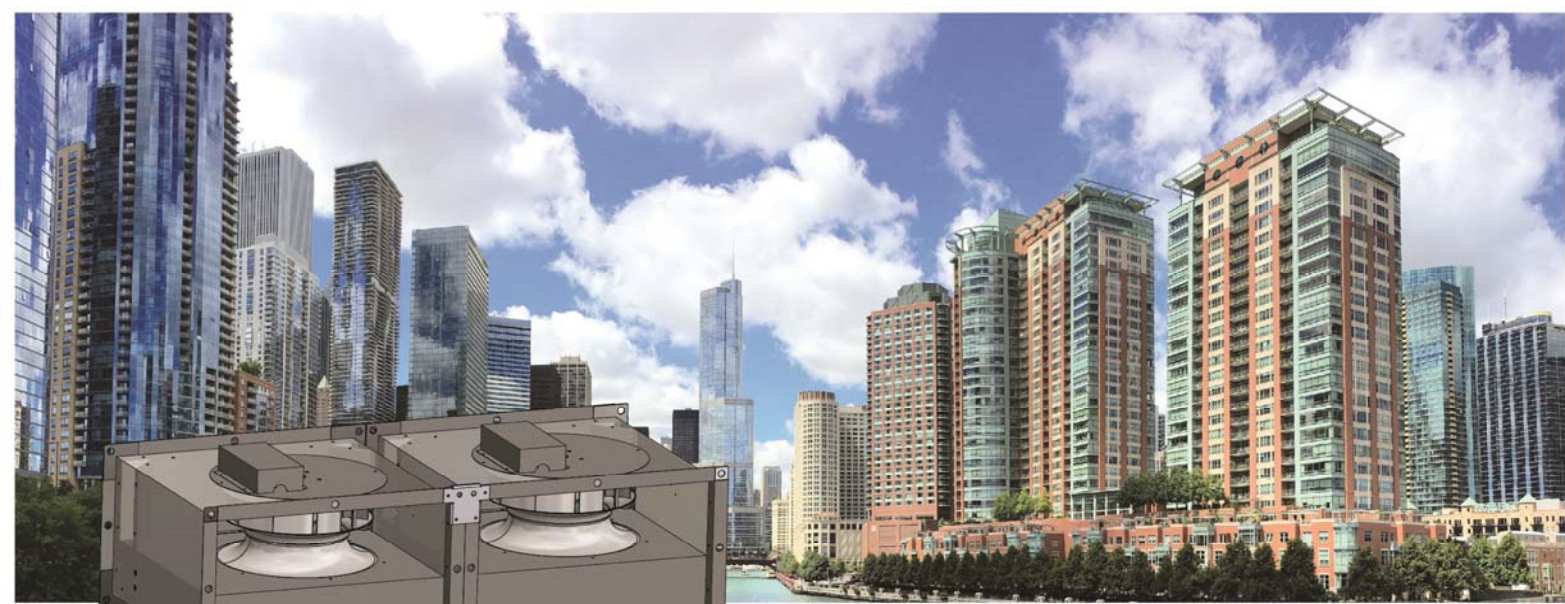


**CFQL
Ms Slim**



Centrifugal In-Line Cabinet Fan Backward Curve CIL





CIL Cabinet Fan

Introduction

Ms Slim (CFQL) series is a **CIL cabinet fan** specially designed with unique modular casing that can function by itself or forming parallel operation where **2 or 3** fans can be joint **side-by-side** easily to meet higher air volume requirements. Thus it is a perfect choice for modern ventilation for space with limited headroom

Suitable for:

Condominium	Office	Restaurant
Kitchen	Meeting room	Dining room
Toilet	Toilet	Kitchen

Range

From CFQL 225 to 500, total 5 models

Features

- **Low height casing** facilitates **low height ceiling** installation
- It's **modular casing** can be easily assembled **Side by Side** to achieve higher performance with DIY concept
- With **multiple fan array**, owner **enjoys**:
 - **Part-load** or **Stand-by** function thus **save** operating cost and avoid system interruption
 - It can be easily assembled at site thus **save installation cost**
- Fast delivery
- Compact in size

Specification

Casing

- Material: GI Steel
- Optional Items:
 - 1) Powder coating
 - 2) Internal insulation with open cell NBR/PE for sound attenuation

Impeller

- Material: Aluminium
- Type: Backward curve centrifugal

Motor

- High efficiency external rotor motor
- Permanently lubricated ball bearing ensuring reliable and maintenance free operation
- Built-in internal protective device
- Insulation : Class F
- IP 44



Inlet Grille (optional)



- GRS 06 (For 6" Duct)
- GRS 08 (For 8" Duct)



- GR 06 (For 6" Duct)
- GR 08 (For 8" Duct)



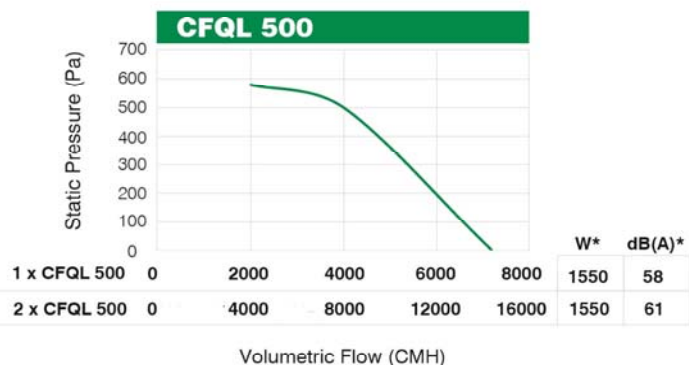
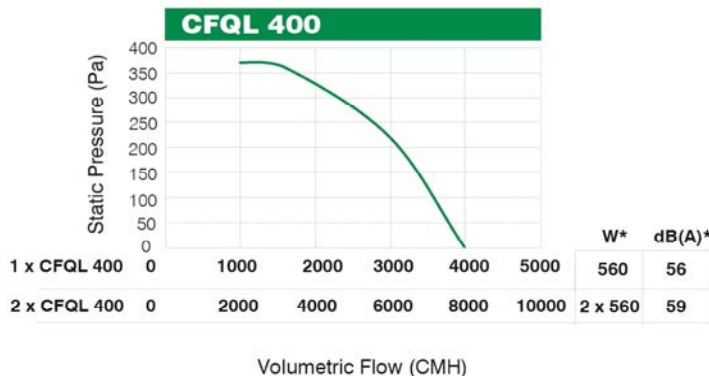
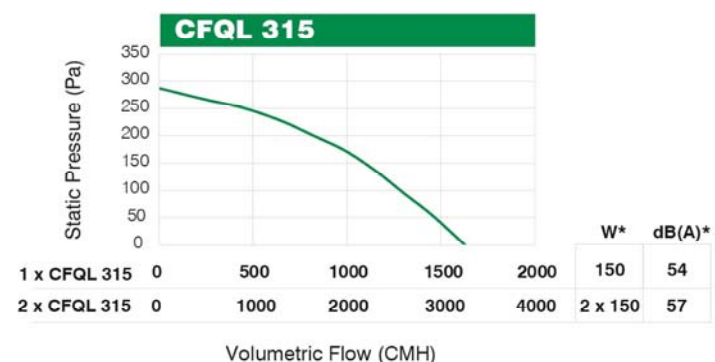
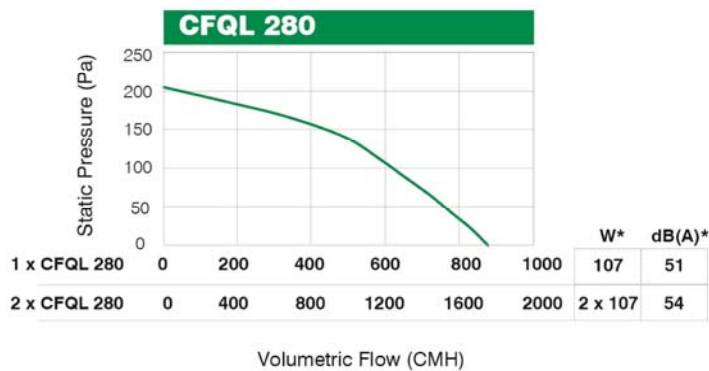
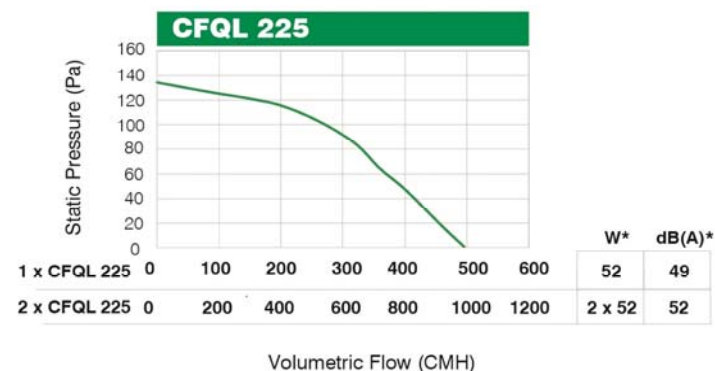
- GAQ 04 (For 4" Duct)
- GAQ 06 (For 6" Duct)

Conversion Table

Air Flow

L/s	m³/hr	m³/s	CFM
1	3.6	0.001	2.119
0.278	1	0.278×10^{-3}	0.588
1000	3600	1	2119
0.063	0.227	0.063×10^{-3}	0.1337
0.472	1.7	0.472×10^{-3}	1

Performance Curves



Conversion Table Static Pressure

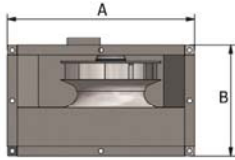
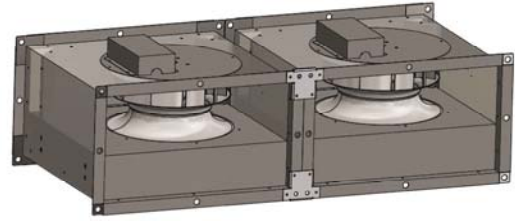
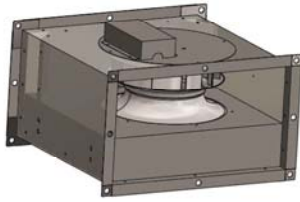
psi	kg/cm ²	W.G.		Pascal (pa)
		(in.)	(ft.)	
1	0.07	27.7	2.309	0.69×10^4
14.22	1	394.08	32.84	9.81×10^4
3.61×10^{-2}	2.538×10^{-3}	1	0.083	248.84
1.45×10^{-4}	0.1×10^{-4}	0.004	3.349×10^{-4}	1

W* denotes Motor Power
dB(A)* denotes Sound Pressure dB(A) @ 3m

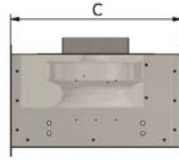
Technical Data

Model	1 x CFQL 225	2 x CFQL 225	1 x CFQL 280	2 x CFQL 280	1 x CFQL 315	2 x CFQL 315	1 x CFQL 400	2 x CFQL 400	1 x CFQL 500	2 x CFQL 500
Volt/Phase/Hz	230/1/50									
Max Power Input (W)	52	2 x 52	107	2 x 107	150	2 x 150	560	2 x 560	1550	2 x 1550
Airflow (CMH) @ FAD	497	994	878	1756	1631	3262	4000	8000	7200	14400
Amps (A)	0.23	2 x 0.23	0.53	2 x 0.53	0.68	2 x 0.68	2.46	2 x 2.46	6.8	2 x 6.8
RPM	1430	1430	1410	1410	1370	1370	1350	1350	1250	1250
Sound Pressure dB(A) @3m	49	52	51	54	54	57	56	59	58	61

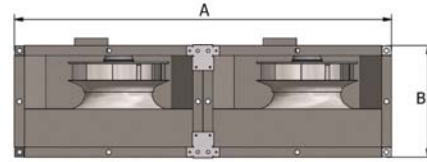
Dimension (mm)



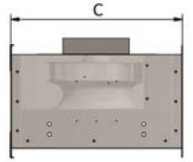
Front View



Side View



Front View



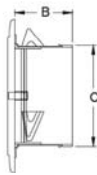
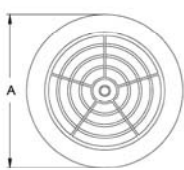
Side View

Model	A	B	C	Weight (Kg)
CFQL 225	492	255	492	15
CFQL 280	602	283	602	20
CFQL 315	640	356	640	25
CFQL 400	722	475	722	37
CFQL 500	892	590	892	59

Model	A	B	C	Weight (Kg)
2 x CFQL 225	984	255	492	30
2 x CFQL 280	1204	283	602	40
2 x CFQL 315	1280	356	640	50
2 x CFQL 400	1444	475	722	74
2 x CFQL 500	1784	590	892	118

Accessories

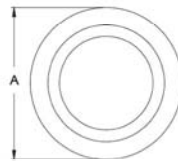
Inlet Grille



GRS06

GRS08

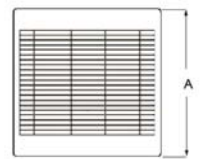
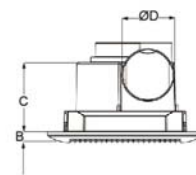
A	210	250
B	84	67
C	145	195



GR06

GR08

A	210	250
B	84	67
C	145	195



GAQ04

GAQ06

A	290	345
B	20	26
C	168	192
D	100	147
Ceiling Opening	245 x 230	310 x 295

GTG Industries Sdn Bhd

(912584-W)

No. 13, Jalan Astaka U8/88B
Seksyen U8, Bukit Jelutong
40150 Shah Alam, Selangor.

TEL +603-7859 0213/0216/0217 FAX +03-7859 0218

EMAIL inquiry@gtg.com.my WEBSITE www.gtg.com.my



SCAN & VISIT OUR WEBSITE



Specification subject to change without prior notice

ID : CFQL / G1 / 110420