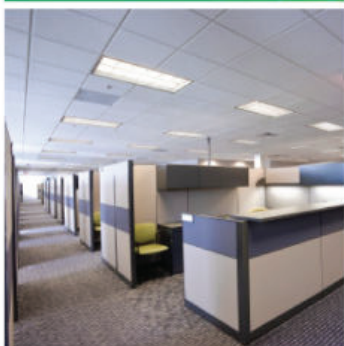
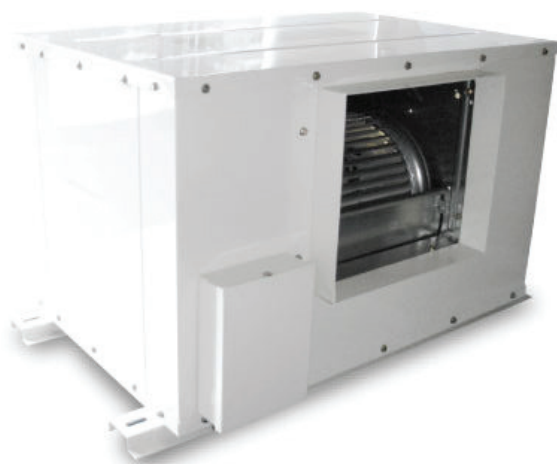


CFD  
series



## 3 Speed Direct Drive Cabinet Fan



GTG Industries Sdn Bhd certifies that the model: CFD shown herein is licensed to bear the AMCA Seal. The ratings shown are based on tests and procedures performed in accordance with AMCA Publication 211 and AMCA Publication 311 and comply with the requirements of the AMCA Certified Ratings Program.



## 3 Speed Direct Drive Cabinet Fan

# CFD series

- ◆ High static pressure application suitable for installation with duct.
- ◆ In line application.
- ◆ Uniquely designed 3 speed motors.
- ◆ Removable access panel for ease of maintainance.
- ◆ Compact in size.
- ◆ Low sound level.

## Introduction

**CFD SERIES** is specially designed for a wide range of general commercial and industrial application with the emphasis on excellent air flow performance with high static pressure at low sound level.



### Casing

Manufactured from rust-resistance galvanised steel sheet.

Optional items:

- 1) Powder coating casing
- 2) Internal insulation with rockwool and perforated aluminium foil for sound attenuation.
- 3) Customised casing size.

### Impeller

Double inlet Double Width (DIDW) forward curve centrifugal (sirocco) fan.

### Motor

High efficiency 3 speed condenser motor.

Permanently lubricated ball bearing ensuring reliable and maintenance-free operation.

Built-in thermal protection device.

### Accessories (Optional)

Filter Chamber.

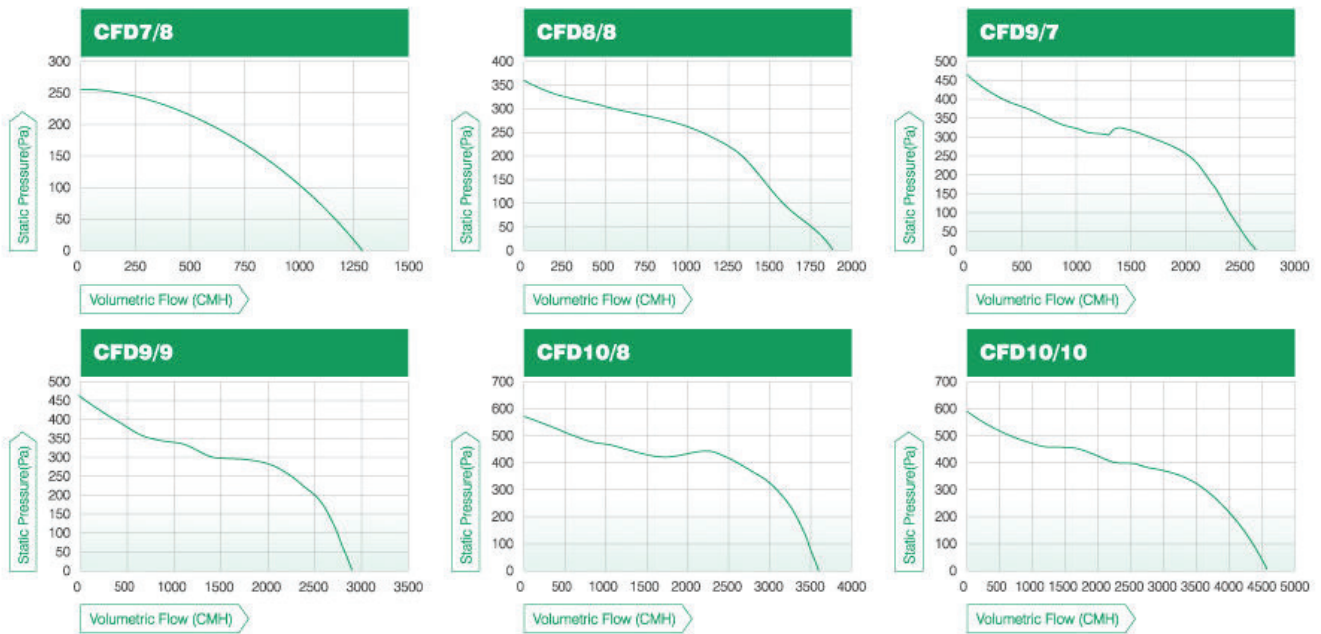


High Efficiency  
3 Speed Motor



DIDW Forward  
Curve Centrifugal Fan

## Performance Curves



## Electrical Data

Model	CFD7/8	CFD8/8	CFD9/7	CFD9/9	CFD10/8	CFD10/10
<b>Speed</b>	H	H	H	H	H	H
<b>Volt / Phase / Hz</b>	240 / 1 / 50	240 / 1 / 50	240 / 1 / 50	240 / 1 / 50	240 / 1 / 50	240 / 1 / 50
<b>Maximum Power Input Watts</b>	252	389	907	1034	1384	1495
<b>Airflow (CMH)</b>	1294	1884	2651	2928	3589	4582
<b>Amps</b>	1.4	1.9	3.9	4.6	6.1	6.4
<b>RPM</b>	1453	1363	1399	1359	1376	1352
<b>L<sub>WA</sub> dB(A)</b>	70	75	79	77	78	80
<b>L<sub>pA</sub> dB(A) at 3m</b>	49	54	58	56	57	59

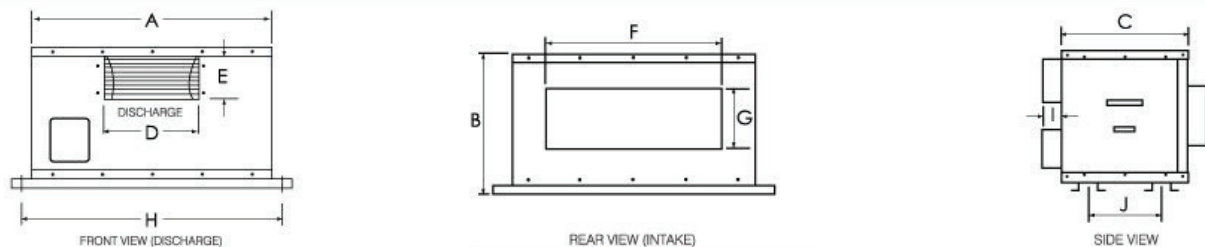
\*SPEED(RPM) SHOWN IS NOMINAL. PERFORMANCE IS BASED ON ACTUAL SPEED OF TEST.

\*L<sub>PA</sub>-DBA LEVELS ARE NOT LICENSED BY AMCA INTERNATIONAL.

\*PERFORMANCE CERTIFIED IS FOR INSTALLATION TYPE D- DUCTED INLET, DUCTED OUTLET. PERFORMANCE RATINGS DO NOT INCLUDE THE EFFECTS OF APPURTENANCES (ACCESSORIES).

\*THE A-WEIGHTED SOUND RATINGS SHOWN HAVE BEEN CALCULATED PER AMCA INTERNATIONAL STANDARD 301. VALUES SHOWN ARE FOR INLET L<sub>WA</sub> SOUND POWER LEVELS FOR INSTALLATION TYPE D DUCTED INLET, DUCTED OUTLET. RATINGS INCLUDE THE EFFECTS OF DUCT END CORRECTION.

## Dimension ( mm )



MODEL	A	B	C	D	E	F	G	H	I	J	WEIGHT (KG)
<b>CFD 7/8</b>	610	320	321	239	96	446	137	660	47	186	19
<b>CFD 8/8</b>	610	450	370	246	162	446	267	660	47	233	20
<b>CFD 9/7</b>	616	395	396	233	264	453	212	666	47	259	27
<b>CFD 9/9</b>	689	450	450	295	260	525	267	738	47	333	31
<b>CFD 10/8</b>	768	520	491	265	290	605	337	818	47	354	37
<b>CFD 10/10</b>	768	520	491	335	290	605	337	818	47	354	38

# 3 Speed Direct Drive Cabinet Fan



## CFD Series

- 1 High static pressure application suitable for installation with duct.
- 2 In line applicaton.
- 3 Uniquely designed 3 speed motors.
- 4 Removable access panel for ease of maintainance.
- 5 Compact in size.
- 6 Elegant appearance.
- 7 Low sound level.



SCAN & VISIT OUR WEBSITE

## GTG Industries Sdn Bhd

(Formerly known as Grand Everise Sdn Bhd)  
(912584-W)

Lot 9, Jalan 13/6, 46200 Petaling Jaya, Selangor, Malaysia.

TEL +603-7957 0212 / +603-7957 0223 FAX +603-7957 0398

EMAIL [inquiry@gtg.com.my](mailto:inquiry@gtg.com.my) WEBSITE [www.gtg.com.my](http://www.gtg.com.my)